

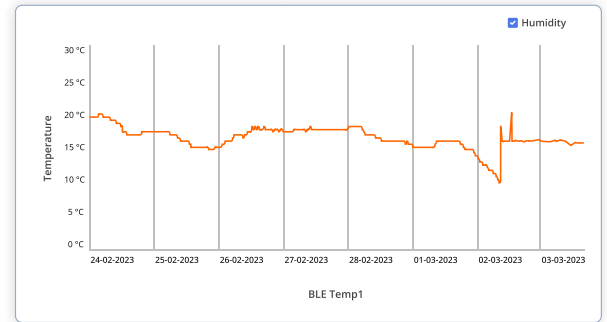
SOLUTIONS

The implementation of temperature monitoring solutions helped address these challenges.

Real-time monitoring of the temperature of the products during storage and transportation, bakeries ensured that their products are being stored and transported at the correct temperature.

The solution also provided real-time alerts and notifications when the temperature deviates from the desired range, allowing for immediate action to be taken.

The solution also helped ensure that the temperature monitoring system is reliable and accurate, reducing the risk of incorrect decisions about product storage and transportation.



Humidity Alert : 75% 02-05-2023 02:29

Sensor BLE1 Vehicle : BT310 Reefer

RESULTS

Ensured Correct Temperature – By implementing temperature monitoring solutions, bakeries ensured that their products are stored and transported at the correct temperature, reducing the risk of spoilage and ensuring customer satisfaction.

Prevent Spoilage – Real-time alerts and notifications helped to prevent spoilage by taking immediate action when the temperature deviates from the desired range.

This led to increased revenue and profitability for the bakery, as well as improved customer satisfaction and loyalty.



Real-Time Temperature Monitoring for Bakery Distribution

INTRODUCTION

Bakery products are highly perishable, and temperature control is critical in maintaining their quality and safety during distribution. Temperature monitoring system is essential to ensure that products are not exposed to harmful temperatures during transit.

Bakery products needed to be stored and transported at the correct temperature, reducing the risk of spoilage and ensuring customer satisfaction.

CHALLENGES

One of the major challenges faced by the bakery product distribution company was ensuring that the products are stored and transported at the correct temperature. Failure to do so led to spoilage, resulting in lost revenue and decreased customer satisfaction. The distribution process involved multiple stops, and it was challenging to monitor the temperature of products at all times. Another challenge was ensuring that the temperature monitoring systems are reliable and accurate, as incorrect readings led to incorrect decisions about product storage and transportation.



RELATED USE CASES



Ensuring Pharma Logistics Vitality
Through Temperature Control



Quality and Safety in Dairy Distribution
with Temperature Monitoring